



The Personal Scalp Cleaner



- Ricoh Elemex Corporation -



- Do You Know?

1. Stress and an Unbalanced Diet Damage Your Scalp

Your daily habits can adversely affect the health of your scalp. For example, too much oily food, staying up late at night, and stress accelerates the production of waste matter. Damage to the scalp occurs more easily than we think.

2. Dirty Pores Obstruct Hair Growth

"I shampoo my hair every day, so my hair is OK." We often hear this, but shampooing alone cannot clean oil and dirt clogging the scalp and pores. Also, shampoo residue may cause itching or inflammation. Adequate cleaning is indispensable.



Introduction



3. A Clean Scalp Promotes Healthy Beautiful Hair

Please remember that your scalp needs the same attention as the rest of your skin. It is impossible to keep your skin beautiful without proper daily care. A healthy scalp is the most important factor in healthy and beautiful hair growth.

4. A Clean Scalp is Important for Hair Growth

Keeping the scalp and pores clean is not only important for woman, but also for men using hair growth products. The effectiveness of these products is reduced by half when used on dirty pores. The **"CARE'NA CARE"** promotes hair growth by keeping the scalp clean.

**The Scalp is a Part of Your Skin.
To Keep it Healthy and Beautiful, Proper Daily
Care is Needed.**



Our Proposal



The Personal Scalp Cleaner "CARE'NA CARE"



Cleaning Power of Pulsation Jet Stream Promises Clean Pores and Fresh Scalp!



What's CARE'NA CARE?



The Pulsation Jet Stream Speedily Washes Off Scalp Dirt and Oil in the Pores!



"If only I could completely eliminate oil and dirt from my scalp and pores at home..." The personal scalp cleaner, **CARE'NA CARE** is your answer. The "Pulsation Jet Stream" of **CARE'NA CARE** washes away not only scalp dirt but persistent oil in pores.



Despite your best efforts to keep your hair clean, hair growth products will not penetrate the scalp if oil and dirt remain

*Pulsation means rhythmical and intermittent movements.

The Pulsation Jet Stream is jet water flow moving at high speed intermittently.



Main Feature

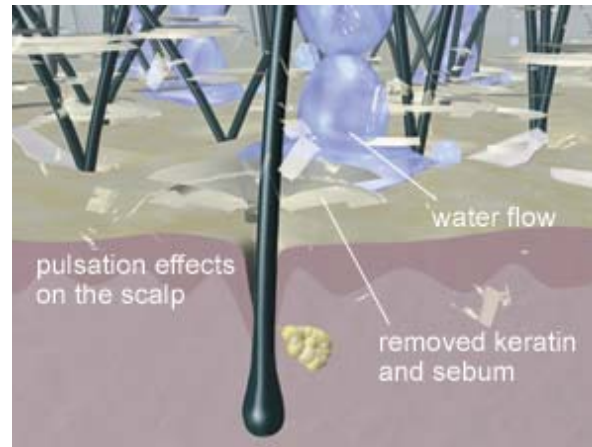


BEFORE



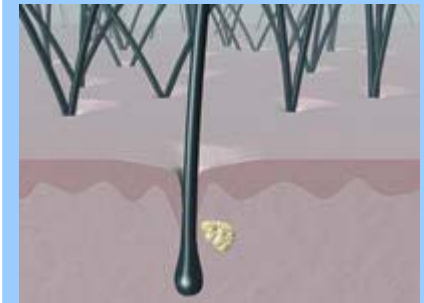
Unconditioned scalp with a lot of dirt and oil

Squeezes Out and Washes Away Oil in Pores!



Rhythmical Stimulation of Scalp Provides Soothing!

AFTER



Clean and healthy scalp



Other Basic Features



It Feels Completely Different from the Shower! Stimulating the Scalp is Refreshing!

The Pulsation Jet Stream spouts 30 times per second and cleans the scalp. The **CARE'NA CARE**. More effective relaxation is achieved by not simply cleaning but by comfortably stimulating the scalp. Residue shampoo and coloring liquids that can cause itching or inflammation are also removed, resulting in a unique refreshed feeling. **CARE'NA CARE** refreshes not only the scalp but your feelings.

One Touch Operation. Easy Operation and User Friendly Design.

Easy operation is one of **CARE'NA CARE** features. To start cleaning, all you need to is press the yellow switch. You can choose the power of stream from Normal to Strong easily. Moreover, the tube and nozzle can be stored inside the tank.



Other Basic Features



Rechargeable Battery Operated: Safe for Use in the Bath

Great care has been taken to ensure safety features. Rechargeable battery operation allows this product to be used safely in the bathroom without the need for electric outlets, and it is waterproof. Its compact size enables use in small spaces. Because it can be used with cold or lukewarm water, it is gentle on the scalp and pores.



How To Use



Instruction for Standard Use



1. Completely rinsed off shampoo and conditioner before use.



2. Fill the tank with water or lukewarm water, then put the chlorine removal powder.



3. Using brush type nozzle to comb your hair so that the stream hits directly to your scalp.



4. Completely dry your hair before you apply hair growth products.



Product Specification



General Specification

Scalp Cleaner Unit	
Name	Care'na Care 8T36
Washing Water Pressure	Hard – About 59×10^4 Pa (6kgf/cm ²) Normal – About 49×10^4 Pa (5kgf/cm ²)
Washing Pulse	About 1,900/min.
Water Tank Capacity	3,000ml (Washing Time: About 2min.)
Length of the Tube	1.1m
External Measurement	Width 270mm x Depth 160mm x Height 220mm
Weight	About 2kg
Rechargeable Unit	
Length of the Power Code	1.5m
Power Source	AC100V 50/60Hz (Japanese spec. can be customize)
Electricity	About 7W
External Measurement	Width 353mm x Depth 172mm x Height 72mm
Weight	About 0.7kg
Battery Charging Time	10 Hours



Contact Information



Please Make All Inquiries About This Product to;

International Division
Ricoh Elemex Corporation

13F Gotanda NN Building, 2-12-19 Nishi-Gotanda
Shinagawa, Tokyo 141-8637
Japan

Phone: +81-3-3495-7230

Fax: +81-3-3495-0640

Email; elemex@mail.rex.grp.ricoh.co.jp

Company home page; <http://www.ricohelemex.co.jp>
Product Home Page ; <http://www.carenacare.com>

We Also Have Professional Use Scalp Cleaner "SCALPUNCH"